

SPECIAL DISTRICT PUBLIC DISCLOSURE DOCUMENT

COUNTRY CLUB HIGHLANDS METROPOLITAN DISTRICT

As required pursuant to Section 32-1-104.8 of the Colorado Revised Statutes ("C.R.S."), this Public Disclosure Document has been prepared by Country Club Highlands Metropolitan District (the "District") to provide information regarding the District.

DISTRICT'S POWERS

The powers of the District as authorized by Section 32-1-1004, C.R.S. and under its Amended and Restated Service Plan, as approved by the City of Westminster, Colorado ("City") on January 31, 2006, are to design, finance, acquire, construct, install, maintain and provide for certain public improvements, including, but not limited to, streets and roadways, and traffic and safety protection improvements.

DISTRICT'S SERVICE PLAN

The District's Service Plan, which can be amended from time to time, includes a description of the District's powers and authority. A copy of the District's Service Plan is available from the Division of Local Government in the State Department of Local Affairs ("Division").

The Country Club Highlands Metropolitan District is authorized by Title 32 of the Colorado Revised Statutes to use a number of methods to raise revenues for capital needs and general operations costs. These methods, subject to the limitations imposed by Section 20 of Article X of the Colorado Constitution ("TABOR"), include issuing debt, levying taxes, and imposing fees and charges. Information concerning District directors, management, meetings, elections, and current taxes are provided annually in the Notice to Electors described in Section 32-1-809(1), C.R.S., which can be found at the District office, on file at the Division, or on file at the office of the Clerk and Recorder of Adams County.

DISTRICT MAP

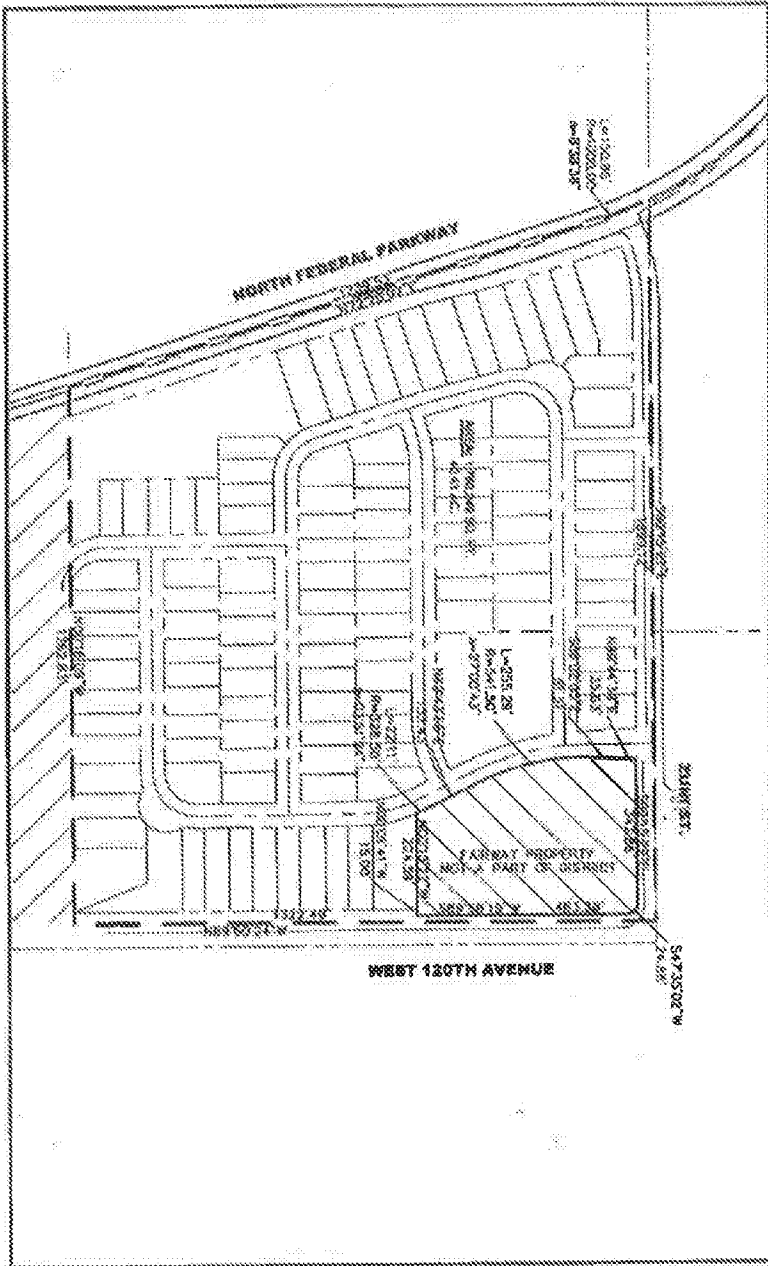
A map of the District's boundaries is attached hereto as Exhibit A.

Dated this 1st day of December, 2014.

EXHIBIT A

District Map

A TRACT OF LAND SITUATED IN THE SOUTHEAST ONE-QUARTER OF SECTION 32, TOWNSHIP 1 SOUTH, RANGE 88 WEST OF THE 6TH PRINCIPAL MERIDIAN, COUNTY OF ADAMS, STATE OF COLORADO



Calibre
 ENGINEERING
 Civil Engineering, Inc.
 5011 Lawrence Lane
 Littleton, CO 80120
 Municipal Engineering Division
 Denver, Colorado

COUNTY CLUB RECREATION
 METROPOLITAN DISTRICT
 BOUNDARY MAP

1" = 300'
 JULY 27, 2005

